



Colvestone Crescent, London, E8

BUTLER  STAG



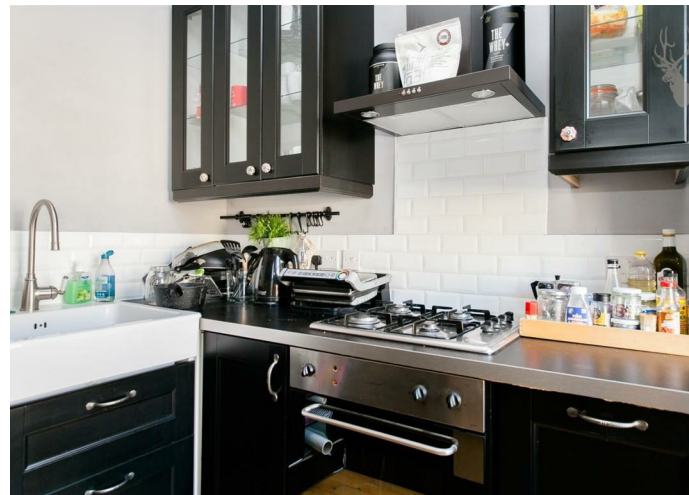
Gorgeous, duplex, 1/2 bedroom period conversion in a fantastic location close to Broadway Market located in London Fields.



- 2 Bedrooms
- Period conversion
- Spacious property
- London Fields
- 2 Bathrooms
- Duplex Apartment
- 937 sq ft
- Available 8th March 2024

Spread across two floors, this 937 sq ft apartment boasts a wealth of light and space. The first floor features a large open plan kitchen/living area with a modern finish. The adjacent room is a generous size and could be used as a living area, office or bedroom. The first floor has a three piece bathroom with a bright floral floor pattern and a black and white finish. The top floor spans 334 sq ft and is a large bedroom with an en suite bathroom and plenty of storage.

The property is conveniently location in Dalston, offering access to a host of bars, restaurants and coffee shops. Its also just a 15 minute walk away with its own wealth of amenities. Dalston Kingsland and Hackney Downs Overground stations are both roughly a 5 minute walk away. Offering quick access to the City.





Colvestone Crescent, E8



Ground Floor

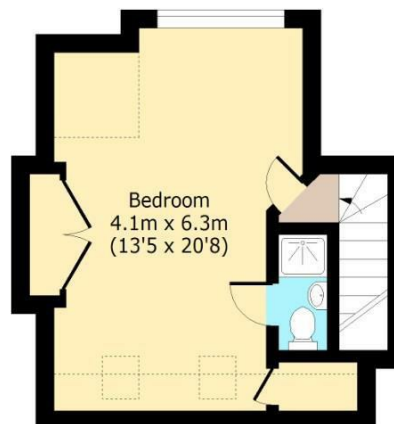
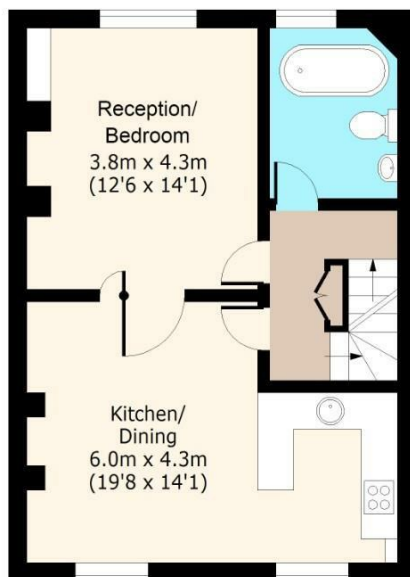
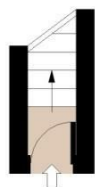
Approx. 2 Sq. meters (22 Sq. feet)

First Floor

Approx. 54 Sq. meters (581 Sq. feet)

Second Floor

Approx. 31 Sq. meters (334 Sq. feet)



Total area: approx. 87 Sq. meters (937 Sq. feet)
For illustration purposes only - not to scale
www.lpaplus.com

BUTLER & STAG

☎ 020 8102 1236

🏠 508 Roman Road, Bow, London, E3 5LU

✉ bow@butlerandstag.com

www.butlerandstag.uk

IMPORTANT NOTICE - These particulars have been prepared in good faith and they are not intended to constitute part of an offer or contract. We have not performed a structural survey on this property and the services, appliances and specific fittings have not been tested. All photographs, measurements, floor plans and distances referred to are given as a guide and should not be relied upon.